



## PS - 10V

### VERTICAL TURBINE

The vertical PS 10 V is a vertical variant of PS 10 model .It uses the same bearing sizes as the PS10 with different angular contact for the orientation. Grease lubrication with lip type seals on the shaft are used to avoid regular oil leakages and facilitate bearing change once is 3-4 years. Various mounting options are available to suit your needs. The power range of the PS 10 V is from 5 to 200 hp.

### Corporate Office

45/7, Trade Center, 5th Floor  
Dickenson Road  
(Next to Manipal Center)  
Bangalore - 560 042  
Ph.: 080 - 2558 5257/58, 2559 5615  
Fax: 080 - 2558 5259  
Email: info@cholaturbo.com

### Works

No. 185, Jedagenahalli, 3rd mile  
Malur Road, Hoskote - 562 114  
Ph.: +91-9900069421  
Email: works@cholaturbo.com

### Regional Office

#### Delhi

Ph. 011 5596199, 25824850/1/2  
Fax: 91 11 25721331  
Email: marketing@cholaturbo.com

### International Office

#### Dubai

Tel No. +971 55519238  
Email: ctmifzc@cholaturbo.com

Representative Offices in Toronto,  
Ho Chi Minh City, Seoul, Tehran,  
Nairobi and Damascus.

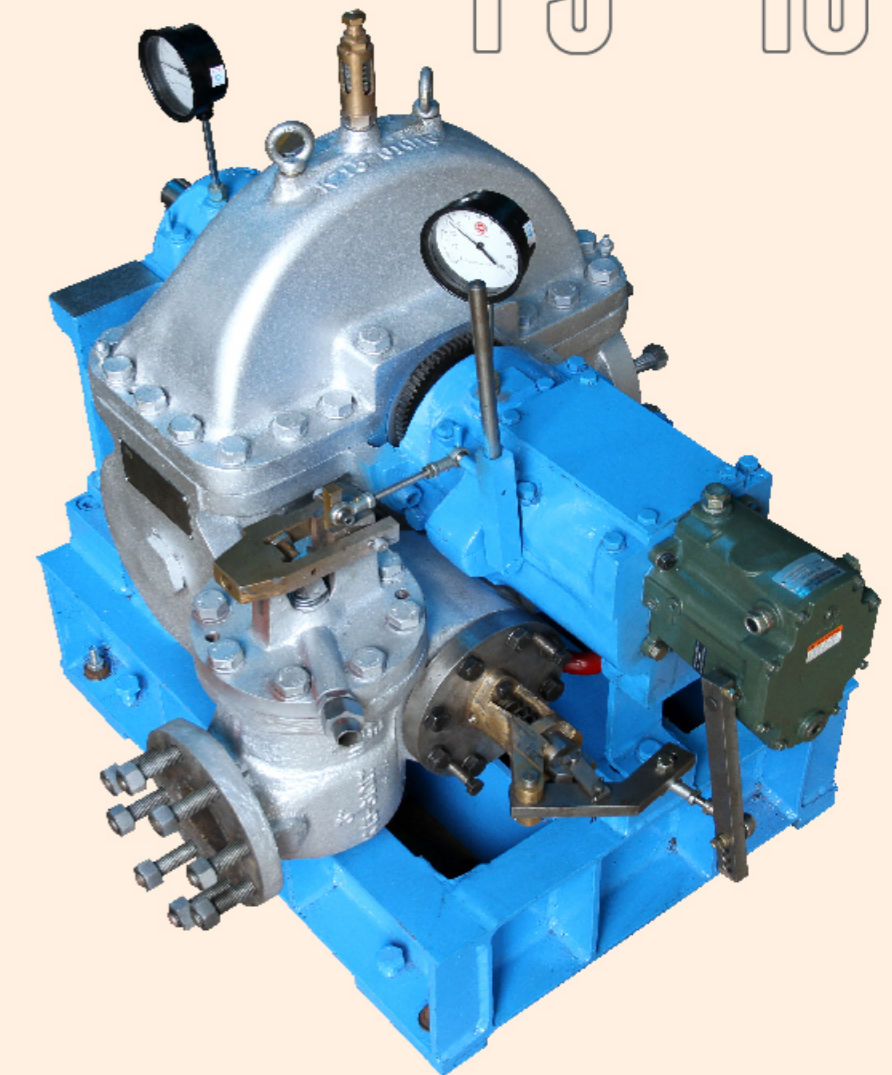


[www.cholaturbo.com](http://www.cholaturbo.com)

an ISO 9001 & 14001 certified company

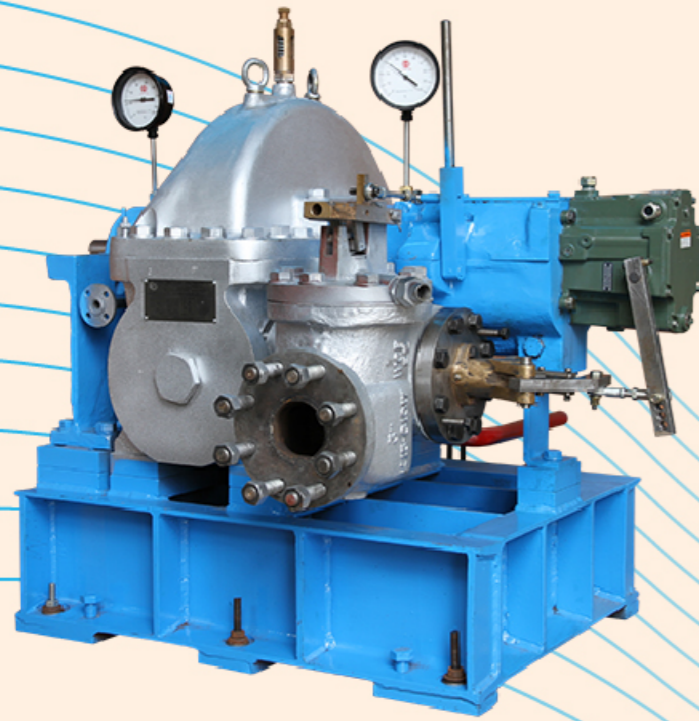
# EFFICIENCY BY DESIGN

## PS - 10



**Chola Turbo Machinery  
International Pvt. Ltd.**

STEAM TURBINES



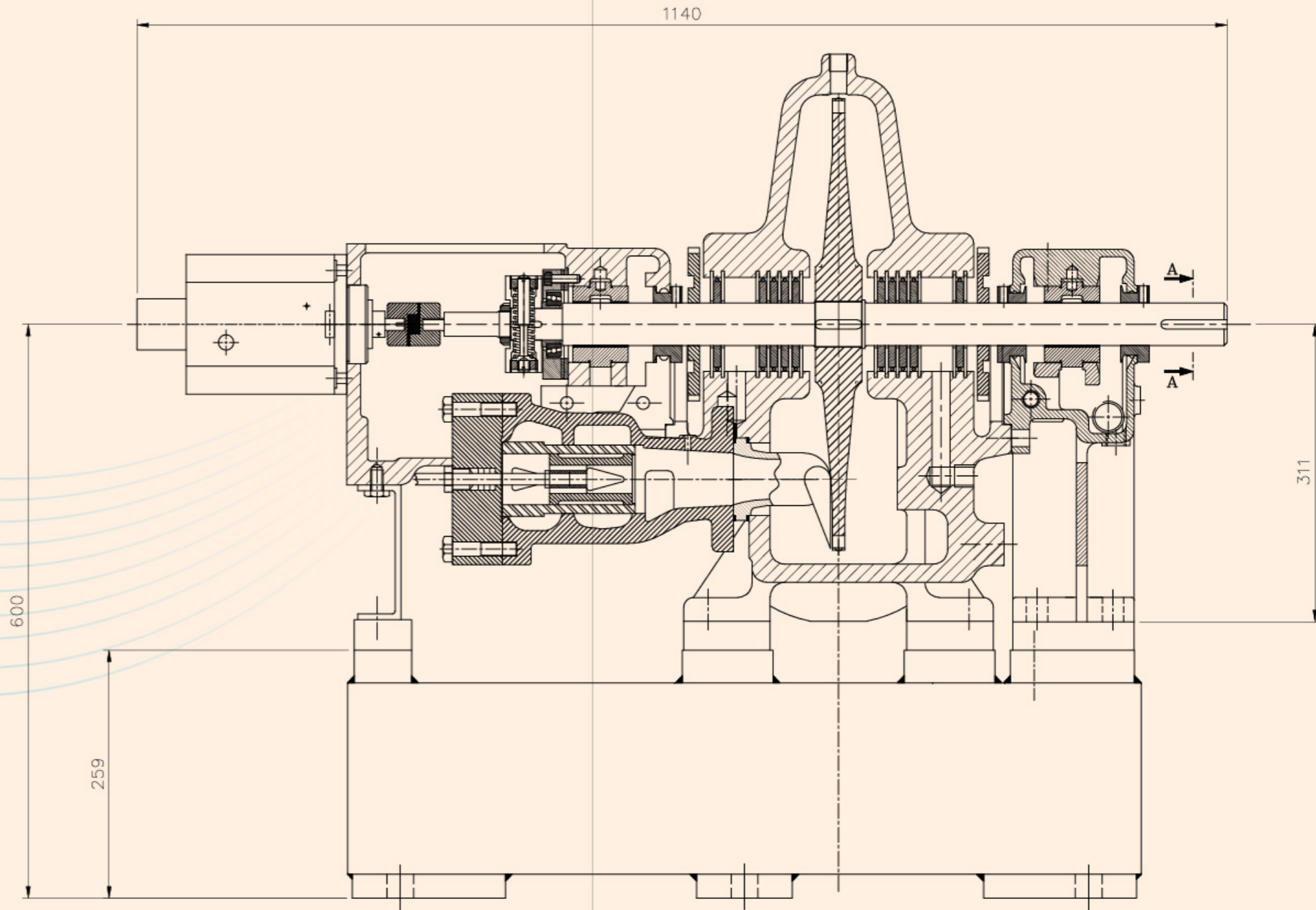
### CTMI SINGLE STAGE TURBINES

CTMI offers single stage models that cover the range of power from 7.5 to 3000 HP (5 to 2238 kW) and all pressures and temperatures to 900 psig/900°F (63 kg/cm<sup>2</sup>/480°C) inlet and 175 psig(12 kg/cm<sup>2</sup>) backpressure.

Following details are about CTMI make Models PS 10 and PS10 V, a highly efficient, compact and successful single stage turbine series which have been a fixture in industries since 2001. This model is also API 611 compliant.

### SALIENT FEATURES OF PS 10

- Woodward TG-13 oil relay governor
- Positive over speed trip
- Antifriction ball bearings throttle valve
- Ball thrust with minimum 48,000 L10 rating
- Horizontally split case with metal to metal joint for ease of maintenance
- Multiple carbon ring gland seals with stainless steel spacers
- Footmounted support system
- Large bearing housing with constant level oilers and integral cooling water jackets
- Wheel with stainless steel blades
- Large efficient monel nozzles
- Balanced, cage guided throttle valve
- Stainless steel turbine shaft
- Simplicity of design assures reliability and low maintenance
- Positive seating tight shutoff valve
- Stainless steel strainer
- Sentinel warning valve
- Condensing or non-condensing
- Optional exhaust location
- Optional rotation



# PS - 10

- Maximum Inlet Gauge Pressure (PSI/Bar) 640/45
- Maximum Inlet Temperature (°F/°C) 840/450
- Maximum Exhaust Gauge Pressure (PSI/Bar) 150/10
- Speed Range (RPM) 1000-5000
- Bearing Type: Ball and/or Sleeve
- Wheel Pitch Diameter (IN/mm) 17.7/450
- Approx. Maximum Rating (HP/kW) 270/200
- Approx. Shipping Weight (LB/kg) 1100/500
- API 611 compliant

### MAKE FREE ELECTRICITY

Replace your pressure reducing valve with our steam turbine generator package and make free electricity. Typically, a small TG set equipped with our PS10 turbine, induction generator, and digital control and interface is effectively as cheap as a diesel generator set but much quicker payback period and virtually no operating cost.

### APPLICATIONS

Pump drives, Fan drives, Generator drives, Compressor drives, knives and Shredders drives.

### INDUSTRIES SERVED

Oil & Gas, Food Processing, Chemical Processing, Pharmaceutical, Steel, Paper, Sugar, Distilleries, Palm Oil, Marine, Edible Oil, Rice, Fertilizer etc.,